

Legend:

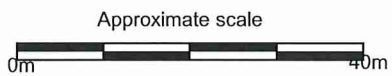
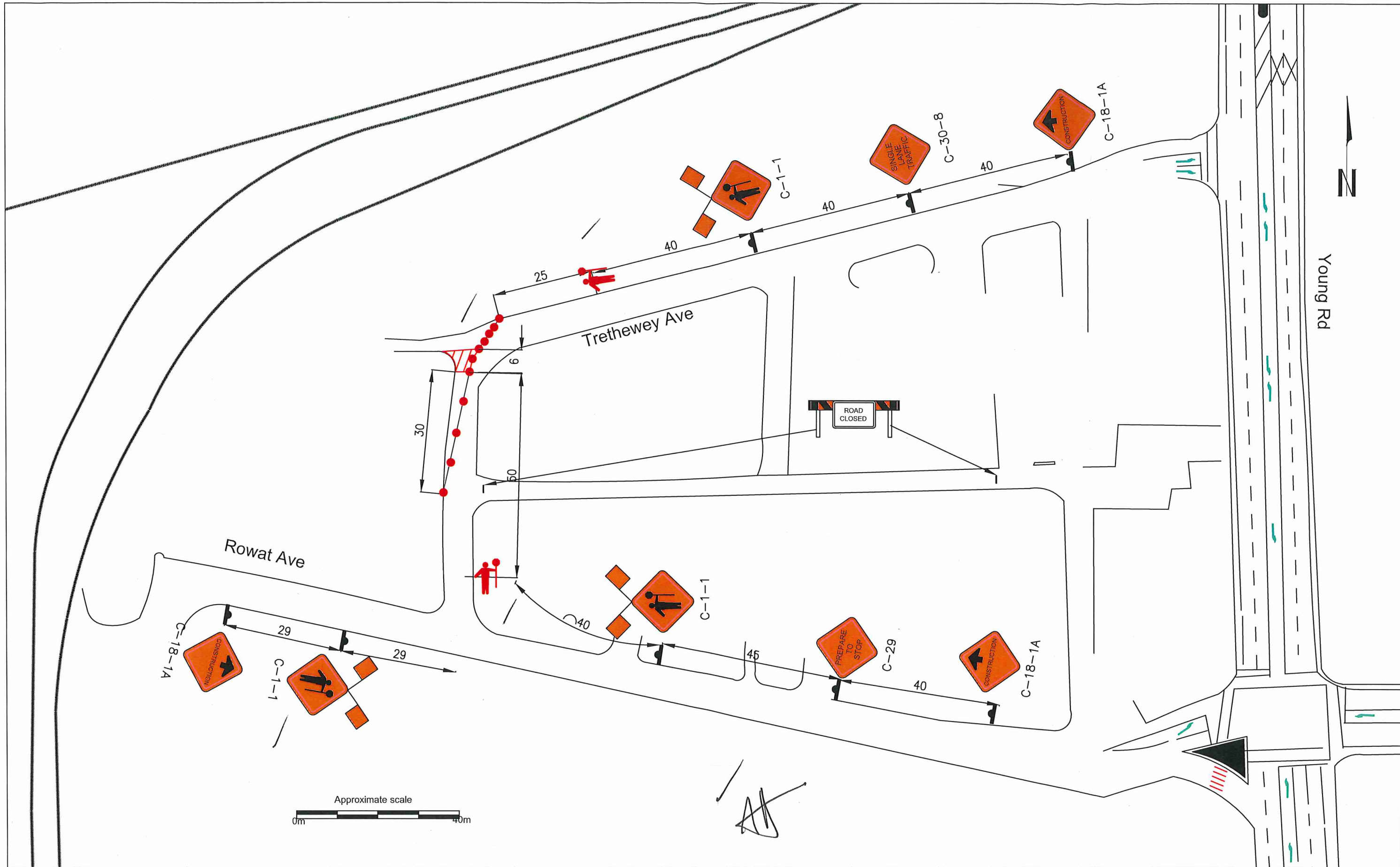
| | | | |
|--|-----------------------|--|----------------------------|
| | Traffic sign location | | Tubular marker Spacing 10m |
| | Work area | | |
| | TCP | | |

- Notes:
- 1 - Traffic sign locations shall be field adjusted to accommodate field conditions.
 - 2 - Access to private driveways to be maintained at all times.
 - 3 - Traffic layout and distances based on Traffic Management Manual for Work on Roadways - 1999
 - 4 - Expected duration of work: TBD
 - 5 - Proposed Obstruction times: TBD
 - 6 - Existing traffic conditions (all lanes open) to be restored at the end of each shift.
 - 7 - All measurements are in meters

Scale: As noted
Date: May. 01, 2019
By: Marg
Revision No.:

Drawing Description:
SLAT on Trethewey Ave, traffic onto W/B

NOMODIC
Trethewey Ave
Chilliwack, BC
City Project:
Dwg No.: 130-01



Legend:

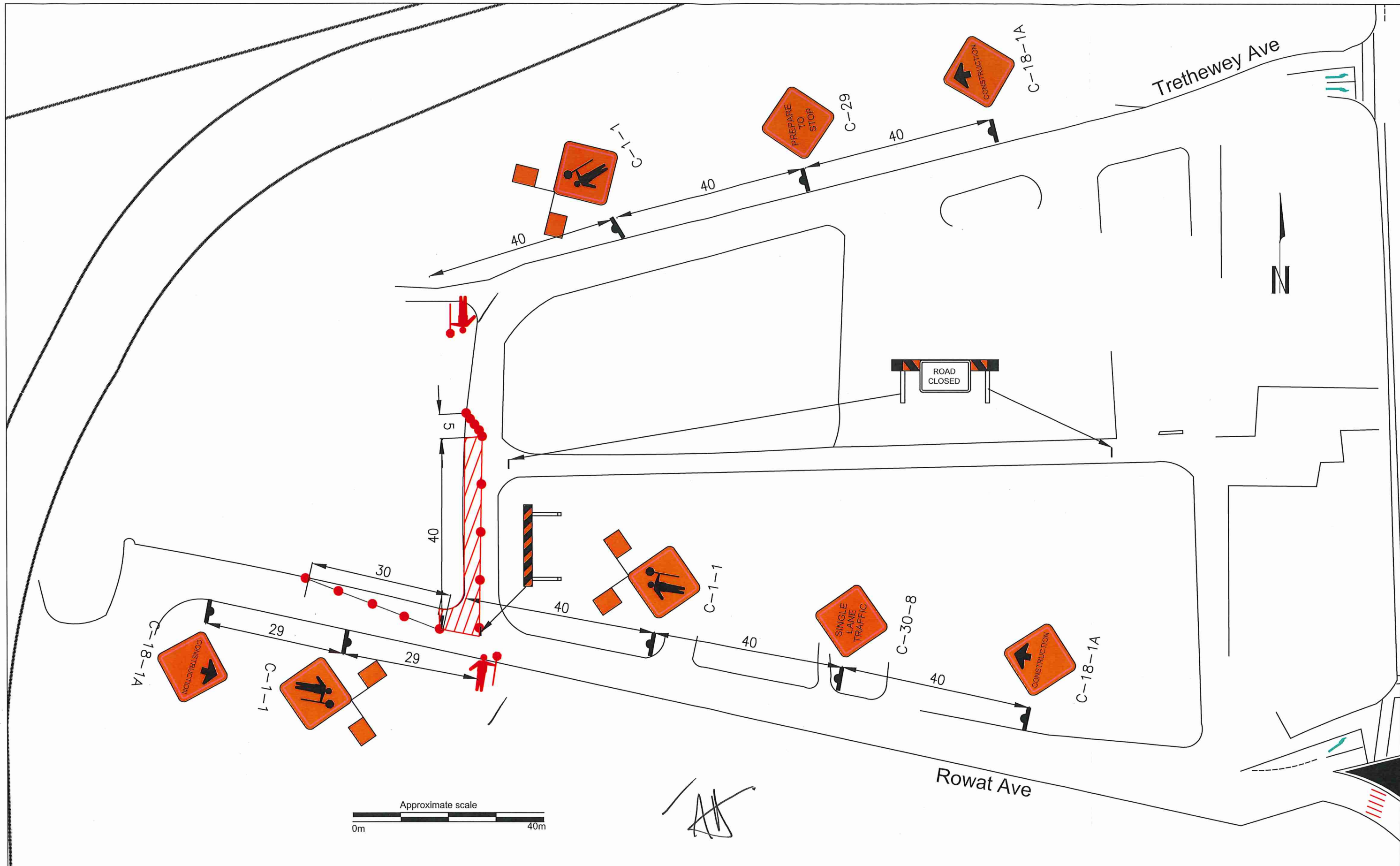
| | |
|-----------------------|----------------------------|
| Traffic sign location | Tubular marker Spacing 10m |
| Work area | Barricade |
| TCP | |

- Notes:
- 1 - Traffic sign locations shall be field adjusted to accommodate field conditions .
 - 2 - Access to private driveways to be maintained at all times.
 - 3 - Traffic layout and distances based on Traffic Management Manual for Work on Roadways - 1999
 - 4 - Expected duration of work: TBD
 - 5 - Proposed Obstruction times: TBD
 - 6 - Existing traffic conditions (all lanes open) to be restored at the end of each shift.
 - 7 - All measurements are in meters

Scale: As noted
Date: May. 01, 2019
By: Marg
Revision No.:

Drawing Description:
SLAT on Trethewey Ave, traffic onto N/B - Part A

| | |
|----------------------------------|-----------------|
| NOMODIC | |
| Trethewey Ave Chilliwack , BC | |
| City Project: | Dwg No.: 130-02 |



Legend:

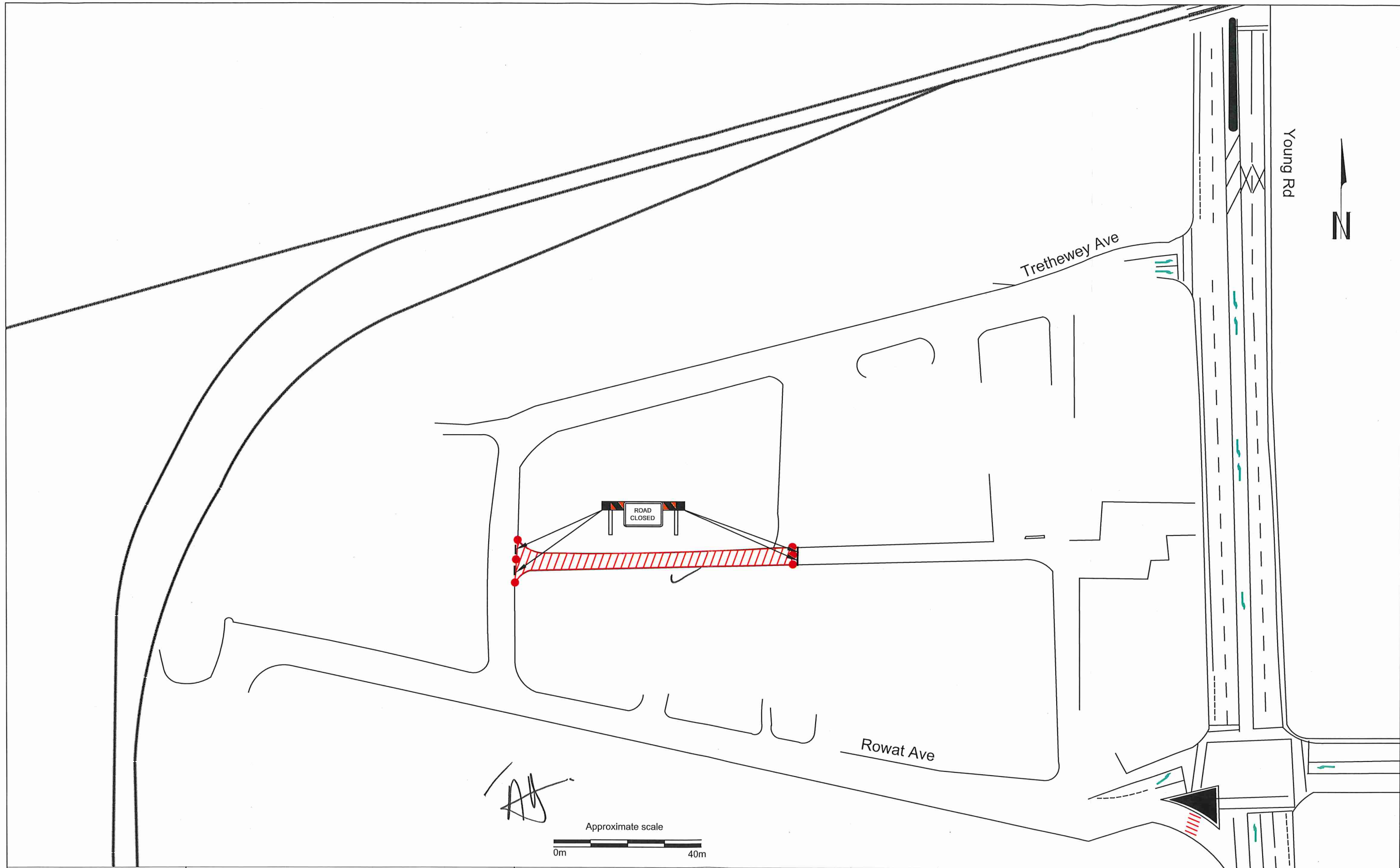
| | | | |
|--|-----------------------|--|-------------------------------|
| | Traffic sign location | | Tubular marker Spacing 10m |
| | Work area | | Barricade |
| | TCP | | |

- Notes:
- 1 - Traffic sign locations shall be field adjusted to accommodate field conditions .
 - 2 - Access to private driveways to be maintained at all times.
 - 3 - Traffic layout and distances based on Traffic Management Manual for Work on Roadways - 1999
 - 4 - Expected duration of work: TBD
 - 5 - Proposed Obstruction times: TBD
 - 6 - Existing traffic conditions (all lanes open) to be restored at the end of each shift.
 - 7 - All measurements are in meters

| |
|---------------------|
| Scale: As noted |
| Date: May. 01, 2019 |
| By: Marg |
| Revision No.: |

Drawing Description:
SLAT on Trethewey Ave, traffic onto
N/B - Part B

| | |
|---------------------------------|-----------------|
| NOMODIC | |
| Trethewey Ave Chilliwack, BC | |
| City Project: | Dwg No.: 130-03 |



AS

Approximate scale
0m 40m



www.torrenttraffic.com

Legend:

-  Traffic sign location
-  Work area
-  TCP
-  Tubular marker
Spacing 10m
-  Barricade

Notes:

- 1 - Traffic sign locations shall be field adjusted to accommodate field conditions .
- 2 - Access to private driveways to be maintained at all times.
- 3 - Traffic layout and distances based on Traffic Management Manual for Work on Roadways - 1999
- 4 - Expected duration of work: TBD
- 5 - Proposed Obstruction times: TBD
- 6 - Existing traffic conditions (all lanes open) to be restored at the end of each shift.
- 7 - All measurements are in meters

Scale: As noted
Date: May. 01, 2019
By: Marg
Revision No.:

Drawing Description:
Back Alley closure

NOMODIC

Trethewey Ave
Chilliwack, BC

City Project:

Dwg No.: 130-04